

TECHNICAL SPECIFICATION FOR 11KV TOP CLEATS WITH CLAMPS

1. SCOPE:

The specification provides for the manufacture, packing forwarding supply and delivery at destination stores (FADS) 11KV Top cleats with clamps made from 100X50mm MS Channel, 50X6mm MS Flat and 50X50X6mm MS Angle as per the drawing enclosed and painted with double coat of best quality red oxide paint.

2. STANDARDS:

The 11KV Top cleats with clamps shall confirm in all respects to the Indian Standard IS-2062. All dimensions are in mm with tolerance as per IS 1852:1985, +5%,-3%..

3. PAINTING:

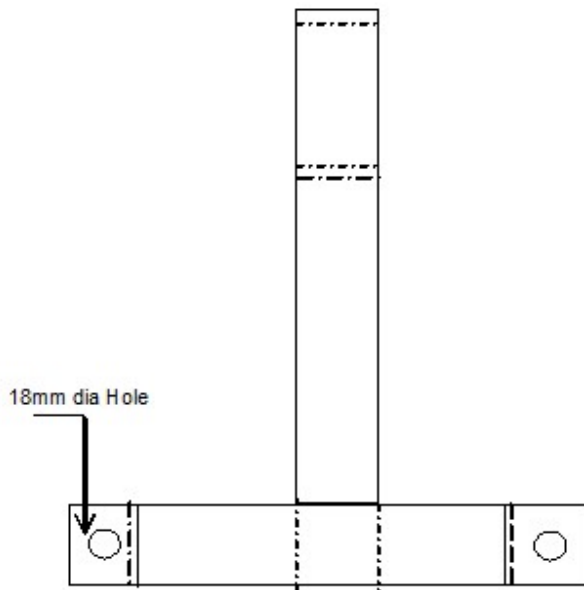
All MS parts shall be painted with two coats of best quality red oxide paint. The Red oxide premier shall be of reputed make such as Asian/ Berger/ Narolac confirming the ISO/DIS 12944:1998.

4. SAMPLES:

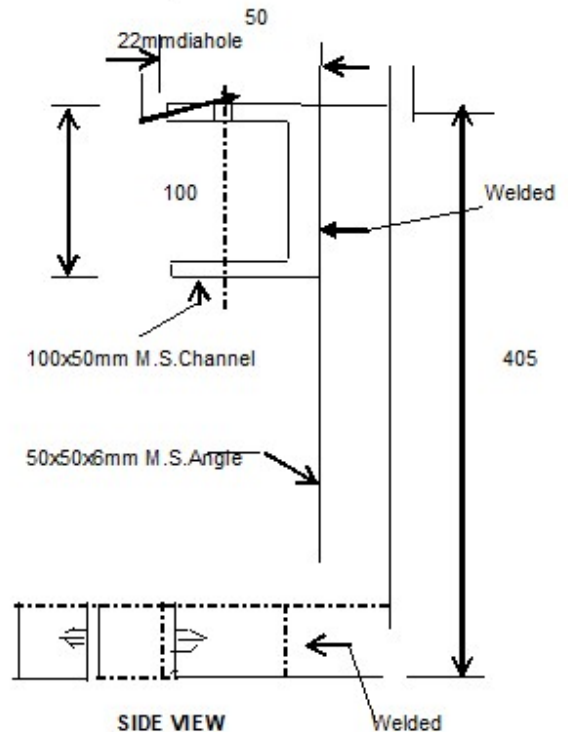
5 nos. samples shall be submitted after placing purchase order on the firm and got approved by the Chief General Manager (P&MM)/ EPDCL / Visakhapatnam before giving offer, otherwise the supplies will not be taken into stock at all the 5 District Stores.

(TECHNICAL SPECIFICATION)
TECHNICAL SPECIFICATION FOR THE
11 KV TOP CLEATS WITH CLAMPS, BOLTS & NUTS

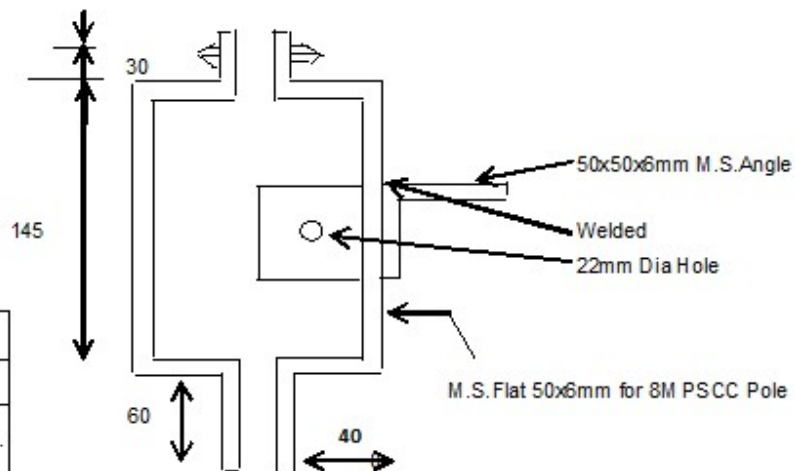
Sketch: (All dimensions in mm)



ELEVATION



SIDE VIEW



PLAN

Sl.No.	Name of the material	Qty.
1)	50x50x6mm MS Angle	1.71 kg.
2)	100x50mm MS Channel	0.395 kgs.
3)	50x6mm MS Flat	1.656 kg
4)	Gross Weight	3.761 kg.
5)	Less scrap	0.11 kg.
Total net weight		3.648 kg.

Note:

- 1) All M.S. Parts are to be painted with two coats of best quality red oxide paint. The Red oxide premier shall be of reputed make such as Asian/Berger/Narolac confirming the ISO/DIS 12944:1998. All Dimensions are in mm
- 2) All dimensions are in mm with tolerance IS 1852:1985, +5%, -3%.
- 3) 2 Nos. M 18 hexagonal Bolts of size 4"x 5/8" with suitable nuts and washers
- 4) Net weight is excluding the weight of Bolts & Nuts

